



PREMIUM

MID-RANGE CLAYS

PREMIUM CLAYS ADVANTAGE

MANGANESE-FREE | NO SPECIAL FIRING REQUIRED*



16M White Chocolate



30M Milk Chocolate



32M Dark Chocolate

Category: Premium Mid-Range Clay
Firing Range: Cone 5-7

All bars are glazed with HF-9 Zinc-Free Clear Glaze.
Fired to cone 5.



Conforms To
ASTM D-4236



Food safe
with glaze

Definition of Cone Temperatures:

Cone 5 = 1184°C (at 150°C/hour for the final 100°C of firing) 2201°F (at 270°F/hour in the final 200°F of firing)

Cone 6 = 1241°C (at 150°C/hour for the final 100°C of firing) 2266°F (at 270°F/hour in the final 200°F of firing)

Cone 7 = 1255°C (at 150°C/hour for the final 100°C of firing) 2291°F (at 270°F/hour in the final 200°F of firing)

CHEAT SHEET

	Cone 5	Cone 6
16M White Chocolate	Shrinkage: 13.5% Absorption: 0.5%	Shrinkage: 13.9% Absorption: 0.3%
30M Milk Chocolate	Shrinkage: 14.36% Absorption: 0.5%	Shrinkage: 14.8% Absorption: 0.2%
32M Dark Chocolate	Shrinkage: 13.4% Absorption: 0.3%	Shrinkage: 14.3% Absorption: 0.2%

PACKAGING

Packaged in easy to carry 20lb boxes with four individually wrapped 5lb blocks.



KEY FEATURES



Manganese Free!



Plastic



No Blistering



Low Staining Formula



V-359 Ultra White Underglaze
on 32M Dark Chocolate clay.
Fired to cone 5.
Artist: Ian F. Thomas

*No manganese means no special firing required! Manganese often creates blistering in a piece if fired normally, but because the chocolate clays are formulated without, they can be fired just like any other mid-high fire clay.

MADE FOR AMACO GLAZES!

FORMULATED TO PAIR BEST WITH AMACO HIGH-FIRE GLAZES. ALL TILES FIRED TO CONE 5.

16M White
Chocolate Clay

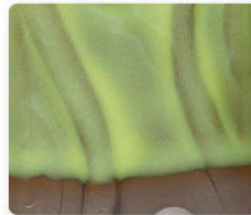
30M Milk
Chocolate Clay

32M Dark
Chocolate Clay

Celadon



C-53 Weeping Plum



C-41 Pear



C-33 Sandalwood

POTTER'S
choice



PC-68 Golden Honey



PC-20 Blue Rutile



PC-17 Honey Flux

POTTER'S
choice
FLUX



PCF-19 Cirrus Flow



PCF-18 Honeydew



PCF-54 Flux Blossom

COSMOS



CO-07 Solar Flare

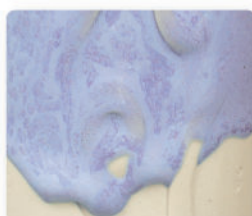


CO-13 Mars Crystal

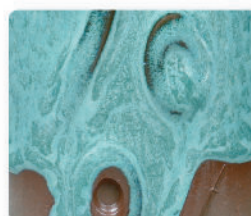


CO-06 Supernova

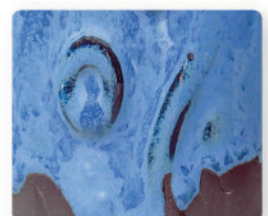
PHASE
GLAZE



PG-55 Floating Lavender



PG-42 Teal Drift



PG-24 Night Rain

SEE IT IN ACTION!



PC-72 Fire & Ice on 16M White Chocolate clay. Fired to cone 5



C-24 Succulent on 16M White Chocolate clay. Fired to cone 5



C-42 Saguaro on 30M Milk Chocolate clay. Fired to cone 5



C-43 Wasabi on 32M Dark Chocolate clay. Fired to cone 5



Variety of Velvet Underglazes and AMACO glazes on 30M Milk Chocolate clay. Fired to cone 5.
Artist: Meghan Yarnell



Variety of Velvet Underglazes and AMACO glazes on 30M Milk Chocolate clay. Fired to cone 5.
Artist: Meghan Yarnell

SGRAFFITO

These dark and rich clays work great for sgraffito!



V-317 Coral on 30M Milk Chocolate clay. Fired to cone 5



V-329 Sea Glass on 30M Milk Chocolate clay. Fired to cone 5



PC-68 Golden Honey on 30M Milk Chocolate clay. Fired to cone 5.
Artist: Kenny Sprinkle

ARTIST HANDLES:

Meghan Yarnell – @meghcallie
Kenny Sprinkle – @kensprink
Ian F. Thomas – @Ian_F_Thomas



WANT MORE?

Visit our 5/6 glaze forum at [Facebook.com/groups/potterschoiceex](https://www.facebook.com/groups/potterschoiceex) to find inspiration, share results, and discuss with other AMACO customers!



[amaco.com](https://www.amaco.com)



[@amacobrent](https://www.instagram.com/amacobrent)



[@amaco_brent](https://www.tiktok.com/@amaco_brent)

Part No: 11847U