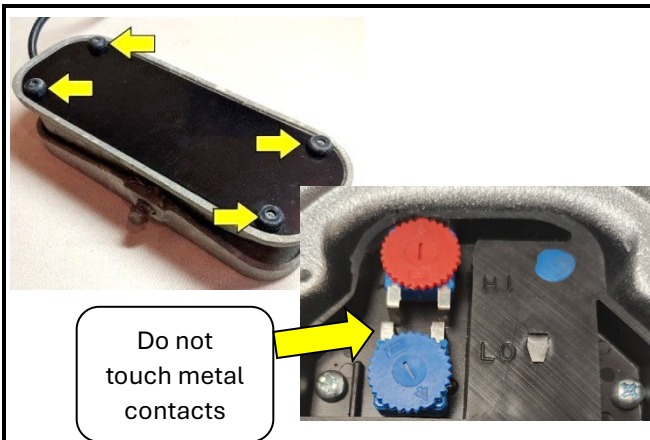


# Instructions for Setting Foot Pedal Speed Control

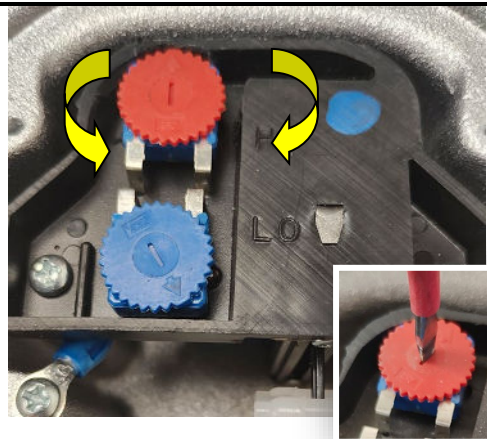


Tools needed: phillips screwdriver, small flat screwdriver (non-conductive), sharpie marker, 3/16" allen key



## 1. Open Pedal and Locate "HI" Speed Dial

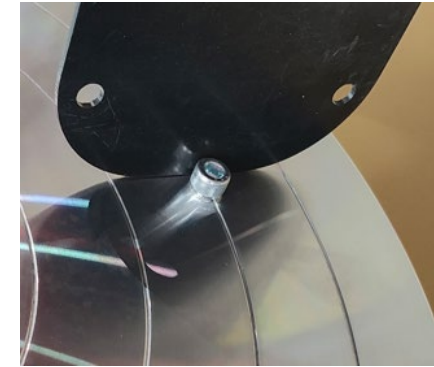
- Remove the (4) foot pedal screws and remove the foot pedal cover.
- Locate the "HI" and "LO" speed dials.
- Remove (1) bat pin using allen key (hold wing nut)



## 2. Set High Speed

- Position pedal at full speed
- Rotate the "HI" dial using the non-conductive screwdriver until wheel RPM is 240rpm (CW increase rpm, CCW rpm)

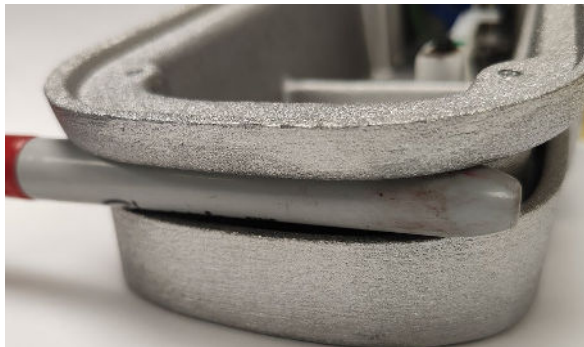
**Warning: Dials only rotate ~3/4 of a turn**



## Ways to determine 240rpm

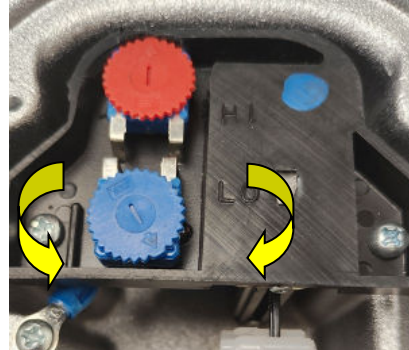
Use digital tachometer **or** download an app:

- Download free metronome app, set at 240rpm.
- Have (1) bat pin installed only.
- Carefully align foot pedal cover to strike rotating bat pin
- Adjust "HI" dial until the sound of the pedal cover and metronome sync. (You will hear it)



## 3. Set Stop Point/Off

- Put pedal in stop/off position
- Insert a sharpie, or similar, to create a ~1/2" gap. (1/2" gap ensures wheel will be fully powered off)



- Adjust the "LO" dial until the wheel stops
- Once set, slowly press the pedal, the wheel should start to move.
- Turn off wheel



Rather watch a video? Follow the QR code for a video walking you through this process of setting your foot pedal.

## 4. Replace Pedal Cover

Tighten foot pedal screw **just enough that the rubber foot cannot rotate**. Do not over tighten!

**YOU ARE DONE! GREAT JOB!!**

AMERICAN ART CLAY CO., INC

6060 Guion Road, Indianapolis, Indiana 46254-1222 USA

(800) 374-1600 • (317) 244-6871 Fax: (317) 248-9300

[www.amaco.com](http://www.amaco.com) email: [technicalsupport@amaco.com](mailto:technicalsupport@amaco.com)